

Meritor Bulls Eye

July 2015

In this issue

- Product In Focus
- New Products
- Supersessions
- Getting Technical
- Global Meritor News
- Employee Profile
- Advertising

Product In Focus



AIR BRAKE HOSES



Features & Benefits

- Meets the design requirements of: United States Department of Transportation (DOT), Society of Automotive Engineers and the National Highway Traffic Safety Administration.
- Extremely flexible and kink resistant.
- Complies with DOT FMVSS 106 requirements.
- Two spiral construction meets SAE J1402 specifications.
- Coupling meets SAE and DOT minimum pull-off requirements.
- High quality brass male pipe fitting on one end, female air brake swivel with male pipe adapter on the other end.
- Temperature rating: -40°C to +100°C.

Quick Reference Guide - All With 3/8" End Fittings - One Fixed End, One Swivel End

PART NUMBER	DESCRIPTION	LENGTH
E-8582-18-BK	1/2" Air Hose Assembly	18"
E-8582-20-BK	1/2" Air Hose Assembly	20"
E-8582-22-BK	1/2" Air Hose Assembly	22"
E-8582-24-BK	1/2" Air Hose Assembly	24"
E-8582-26-BK	1/2" Air Hose Assembly	26"
E-8582-28-BK	1/2" Air Hose Assembly	28"
E-8582-30-BK	1/2" Air Hose Assembly	30"
E-8582-32-BK	1/2" Air Hose Assembly	32"
E-8582-34-BK	1/2" Air Hose Assembly	34"
E-8582-36-BK	1/2" Air Hose Assembly	36"
E-8582-42-BK	1/2" Air Hose Assembly	42"
E-8582-48-BK	1/2" Air Hose Assembly	48"



Fixed End fitting



Swivel End fitting

Air Hose Assembly Wall Display Racks — E-8703

- Holds up to 48 Air Hose assemblies – easy to store and re-order.
- Good for showroom display or workshop.
- 12 hooks each hold 4 Air Hose assemblies.
- 48 pre-printed Euclid part number labels and 20 blank labels included with each rack.



New Products



Part Number	Description	List Price **
92NYS332	End Yoke 2.75'X10 Spline 92N Series	\$1,434.27
KIT11205	Pivot Bolt & Bush Kit RFS25T	\$387.22
KIT2920	Kit-Adj Ring	\$296.08
R230004	Tie Rod End	\$154.12
R230005	Tie Rod End	\$154.12

Supersessions



Old Part Number	Description	New Part Number	List Price **
R801079	Kit Clevis, Auto Slack	R8083108	\$28.99
2214W1271	Adjusting Ring	2214Q1343	\$90.33

For a full list of supersessions, please [Click Here](#).

All parts displayed above will be available for immediate ordering. Lead times may apply for some of the listed items. Not all parts are available to Independent Customers. Please contact Meritor Customer Service on (03) 8353 6050 for further information.

**All list prices are correct at time of printing and subject to change.

Please contact your local OE Dealer for pricing information.

Getting Technical



FAQ - Seeking Technical Support

What do I do if I need part numbers for...

- steering knuckles
- camshafts and bushes
- tie rod ends
- “I” beam or centre axles
- steering and tie rod arms
- axle shafts
- banjo housing with suspension brackets
- brake pads, rotors and calipers

Please contact us with the information on the tag off the steer or drive axles.

Where can I find the tag?

- *The tag on the steer axle is behind the “I” beam in the centre.
(eg. FG941LA293KW)*
- *The tag on a drive axle is on the top of the banjo housing, on one side of the bowl. (eg. RP23160ACLK566430).*

(For the exact location of these numbers, please see illustrations on the next page.)

What do the numbers mean?

Details are on the following pages.

Would you need any other information to help me obtain part numbers faster?

- *On drive axles, it is also a good idea to inform us of the information on the tag, positioned on one side of the carrier if possible.
(eg. Z3200U2049 456)*
- *If the vehicle is an import, we may need to source additional information from our factories overseas.*

In general, where can I find information on...

- a bearing kit, gearset or any internal parts for a differential
- part numbers of input/output yolks on a drive axle
- parts for any wheel end part. (Brakes or hubs and drums)
- brake group numbers that are not listed on the vehicles documents
- identifying a differential model

You can contact us at Technical Support or refer to our catalogues on the Australian section of our website at www.meritorpartsonline.com

If your FAQ are not listed here, please call us on (03) 8353 6050.

Getting Technical Cont;



Front Non Drive Steer Axles - Identification

MFS SERIES



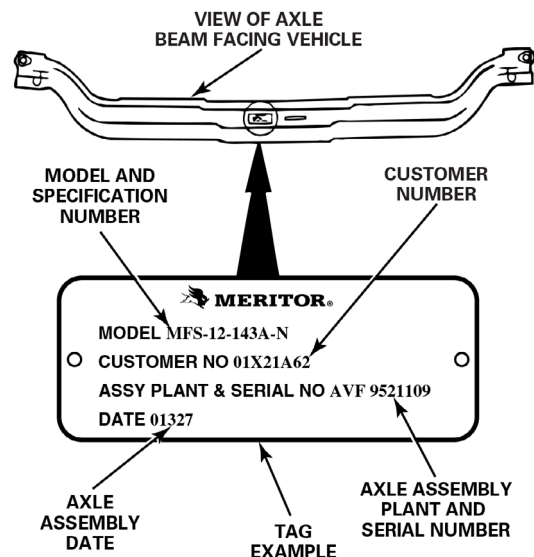
FF SERIES



The axle build information and assembly date for Meritor front non-drive steer axles is on the axle identification tag. The identification tag is fastened to the center of the beam at the front surface. The axle assembly date is located in either the lower right-hand or left-hand corner of the tag. The Julian method is used to indicate the axle assembly date. The first two digits indicate the year, and the last three digits indicate the day of the year.

In the example below, 01 is the year 2001 and 327 refers to November 22 (count the 327th day of the year). **Please note that this is not the method to obtain numbers for parts.**

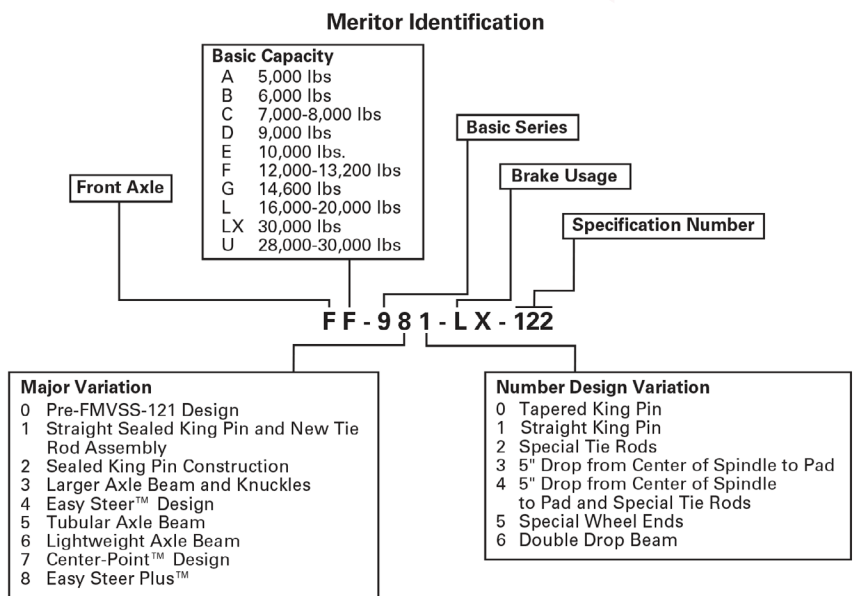
To identify the model number, refer to the identification plate on the front of the beam. Use the complete model number to obtain parts.



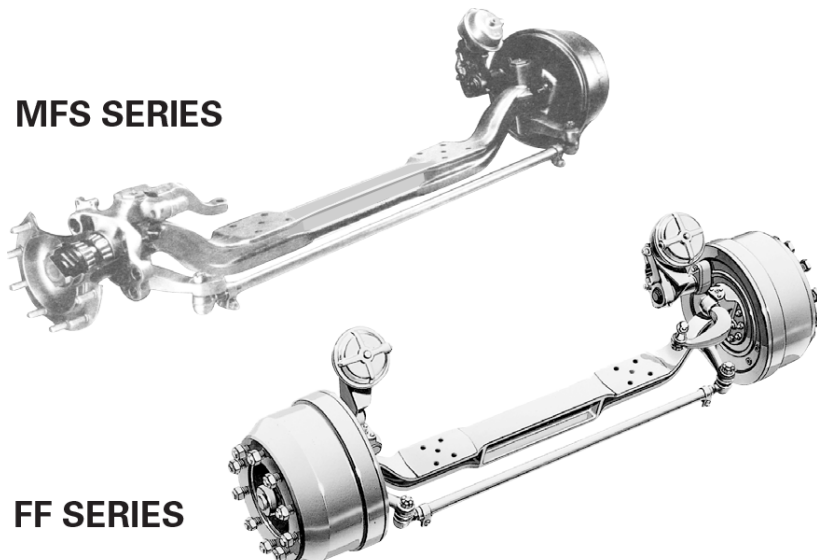
Getting Technical Cont;



Front Non Drive Steer Axles - Model Nomenclature



MFS SERIES

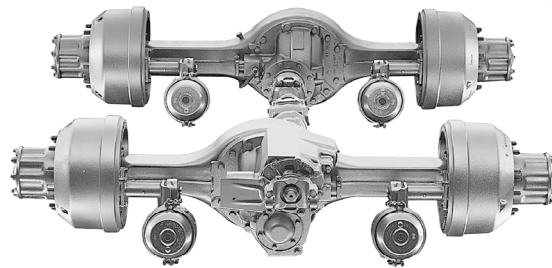


FF SERIES

Getting Technical Cont;

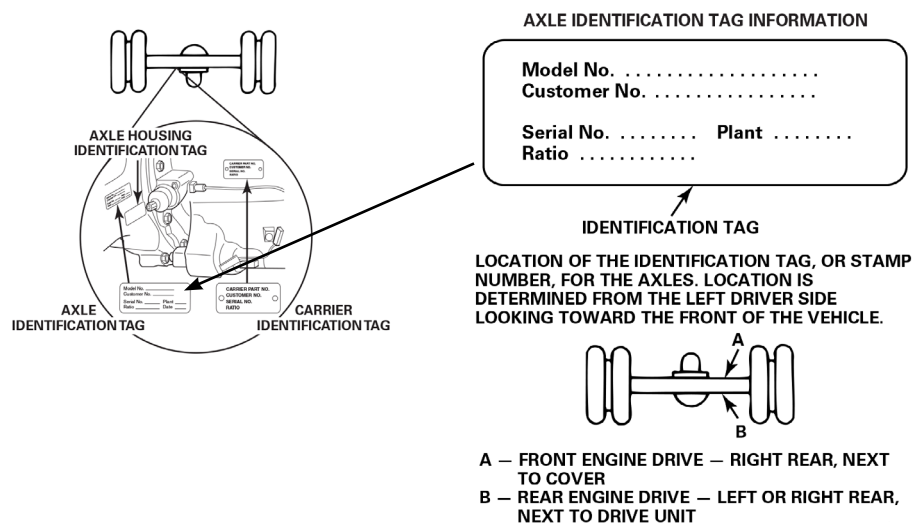


Single, Tandem & Rear Drive Axles - Identification



RT SERIES

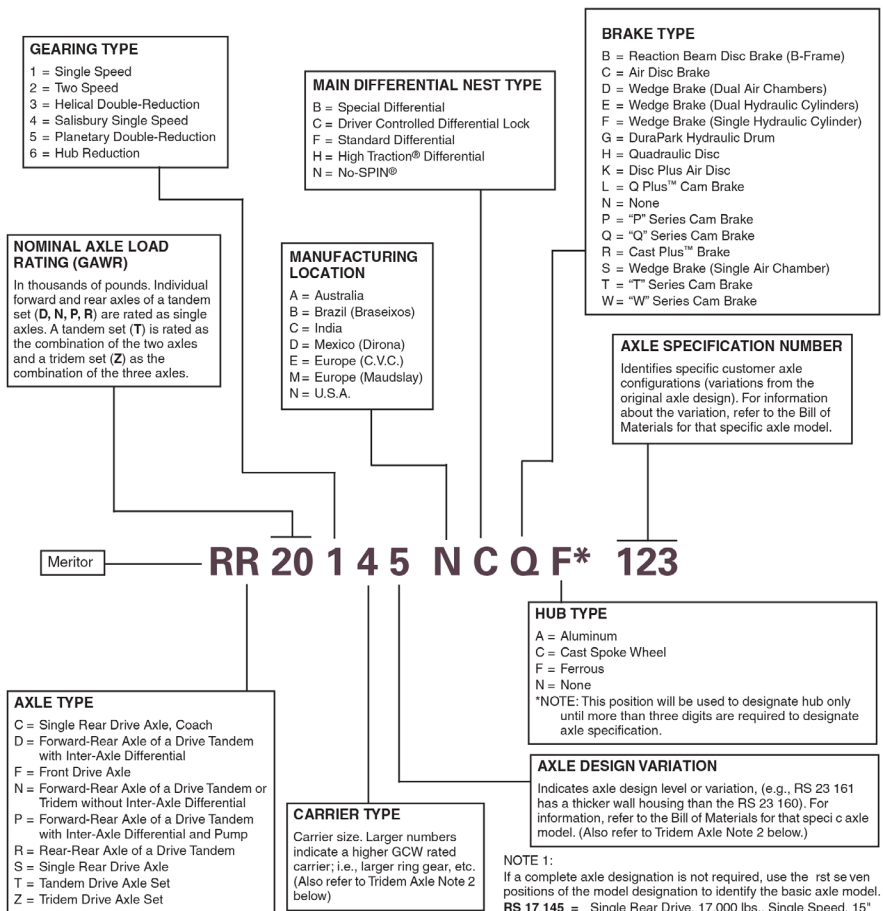
An identification tag is riveted on the axle housing or on the differential carrier. Use the model number and the ratio number marked on the identification tag and the number on the carrier to order replacement parts.



Getting Technical Cont;



Single, Tandem & Rear Drive Axles - Model Nomenclature



NOTE 2, FOR TRIDEM AXLES ONLY:
 For a Tridem Drive Axle Set (RZ), the number in the sixth position designates the carrier in the 1st axle. The number in the seventh position designates the carriers in the second and third axles.

NOTE 1:
 If a complete axle designation is not required, use the 1st seven positions of the model designation to identify the basic axle model.
RS 17 145 = Single Rear Drive, 17,000 lbs., Single Speed, 15" Ring Gear, 145 Carrier Model.
RT 52 380 = Tandem Drive Axle Set, 52,000 lbs., Helical Double-Reduction, 19.62" Ring Gear, 380 Carrier Model.
RZ 60 164 = Tridem Drive Axle Set, 60,000 lbs., Single Speed, Includes a 160 Series Forward Rear or First Axle and a 145 Series Tandem Axle Set as the Second and Third Axles.

Around The Globe



Meritor Awards Meritor Staff with 2014 Lifetime Achievement Award for Manufacturing Engineering

Meritor, a leading global supplier of drivetrain, mobility, braking and aftermarket solutions for commercial vehicle and industrial markets, recently honored Gareth Cantle, Tomaz Varela, Pedro Garcia and Jay Beeler with its 2014 Lifetime Achievement Award for Manufacturing Engineering.

Gareth Cantle, manufacturing engineer, received the award for numerous contributions to air disc brake manufacturing and for his role as the architect of Meritor's modern assembly processes. His accomplishments include launching the assembly of Meritor's ELSA®-branded modern air disc brakes, introducing robotic assembly and automatic packaging machinery to the company's Cwmbran, United Kingdom facility and establishing Meritor's air disc brake assembly in China. Gareth also is responsible for introducing semi-automatic air disc brake assembly and a next-generation hybrid air disc brake assembly for a faster, leaner and more cost-effective solution.

Tomaz Varela, chief engineer for Meritor's business in China, received the award for leading numerous development projects for specialty and off-highway axles, brakes and wet-disc brakes. Varela, a member of Meritor's Intellectual Product Committee, has registered nearly 40 patents in the past 20 years. He has led development teams for several products, including a family of axles for cranes in China, new fabricated housing design architecture for off-highway axles and new heavy-duty hub reduction axle for port terminal tractors. He currently leads Meritor's off-highway engineering team in China.

Pedro Garcia, project engineer for Meritor, earned the award for his distinguished leadership in the design and development of Meritor's carriers for trucks and off-highway applications. His design and development work includes the 13X medium-duty carrier and several other drive axle carriers, such as the 18 Series carrier for the China market and design variations of the 14X and 160 carriers. He is a recognised leader in continuously championing Meritor's improvement of design, development and documentation processes.

Jay Beeler, manufacturing engineer for Meritor's Morristown, Tennessee facility, earned the award for development work on the relaunch of the company's 14X near net program as well as milling technology and forging simulation processes that improved the plant's manufacturing capabilities. His solutions have helped the company manufacture its products more efficiently and reduce die manufacturing cycle times by 80 percent.

As recipients of the award, the Meritor Trust Fund has made a charitable donation of \$1500 to go towards chosen universities and organisations on behalf of all 4 engineers.

Employee Profile - Tania Wagner



Role at Meritor: Manager - Customer Service CVA

Year Joined: 2012

What is your background in customer service?

I have previously worked for an international freight forwarder in the Customs and Export departments and a large computer manufacturer in their Order Fulfilment department. I co-ordinated orders and product between international sales reps, customers and the production facility located overseas.

What are your main job responsibilities?

Supervising the Customer Service team, ensuring road blocks are removed and being the voice of the customer within Meritor. Ensuring Customer Service are answering the phones and processing orders in a timely manner to meet the customers' expectation.

What do you enjoy most about your role?

I enjoy the variety each day brings and the opportunity to talk to a wide range of customers while helping them with their requirements. I work with a great, dedicated and fun team of people who bring a wealth of industry and technical knowledge to their roles within the company. This in turn helps the Customer Service team and I support our customers.

What is your biggest challenge in this role?

Ensuring VOR (Vehicle Off Road) and urgent customer requirements are managed to meet and exceed their expectations wherever possible.

What are your interests outside work?

Spending time with family and friends. Gardening, cooking, visiting art galleries and exhibitions, attending church and spending time outdoors.

